



online

community



outreach



Johnson County
Library

**Johnson County Library
2006 Annual Report**



Johnson County Library

JOHNSON COUNTY LIBRARY BOARD

Kenneth D. Davis, Chair

Charley Vogt, Vice-Chair

Pam Crandall, Treasurer

James P. Berger

Terry Goodman

Michael E. Krolski*

Jenifer Lathrum

Carol Snyder

**term expired April 30, 2006*

JOHNSON COUNTY, KANSAS BOARD OF COUNTY COMMISSIONERS

Annabeth Surbaugh, Chairman

C. Edward Peterson, District 1

John Patrick Segale, District 2

David A. Lindstrom, District 3

Dolores Furtado, District 4

Douglas E. Wood, District 5

John Toplikar, District 6

JOHNSON COUNTY LIBRARY ADMINISTRATION

Mona Carmack, County Librarian

Diana Graves, Administrative Manager

Donna Lauffer, Associate Director for Branch Services

Kasey Riley, Communication Manager

Tim Rogers, Associate Director for Operations

Carolyn Weeks, Associate Director for Central Services & Collections

Johnson County Library - Building Community

A Message from the Interim County Librarian

2006 was a year of exciting change, milestones, memorable events and new services that reach patrons in their homes and places of work. County Librarian Mona Carmack announced her retirement after 18 years of outstanding leadership for Johnson County Library. She leaves a legacy of community building and award-winning library service on which a new director will build. We thank her for her dedication and service.

Milestones include reaching the 100 million mark of circulated items since the founding of the Library in 1952. 2.3 million virtual visits to the Library in 2006 marked an all-time high as the community used the virtual resources found through the Library's Web site: www.jocolibrary.org. New online services include downloadable audio books, an online, interactive calendar, podcasts and blogs available through the Johnson County Library Web site.

The JoCoHistory.net Web site launched in the fall of 2006 and brings together resources from Johnson County Library, Olathe Public Library, Johnson County Museum and Johnson County Archives. Digital online resources, such as historic photographs, are available for the community to learn about the history of Johnson County.

Members of the community may also find valuable business resources related to *The Kansas City Star* business feature articles compiled by Johnson County Library at KansasCity.com, the online component of *The Kansas City Star*. Readers of KansasCity.com business section now access Johnson County Library's resources every Tuesday and Sunday via a link to the Johnson County Library Web site.

Homework assistance was enhanced in 2006 by the addition of Live Homework Help online as a complement to the in-person assistance of Homework Help staff and volunteers who assist students with school assignments at library locations after school, in the evenings and on weekends.

Library programming in 2006 connected with more than 3,700 youth and adults, including outreach outside of library facilities. A September 11, 2001, five-year remembrance ceremony included tributes to first responders, a mural created by teen artists, and creation of a video featuring members of the community sharing their thoughts and memories of that fateful day.

The Johnson County Library Foundation launched a \$6 million enrichment campaign to build an endowment to support Library collections and to provide programs. The Friends of the Johnson County Library celebrated their 50th anniversary.

Johnson County Library's successes in 2006 were made possible through the generosity of countless supporters in the public and private sectors. The Library offers sincere thanks to the individuals and organizations who invest in the Library's future as we continue to build connections throughout the community.



Donna Lauffer,
Interim County Librarian

online

Johnson County Library provides a variety of online resources. These are available to visitors in the Library, as well as from outside the Library, with a library card number and PIN.

The Library also collaborates with other entities to develop and maintain Web sites with content of interest to the community. JoCoHistory.net was introduced in the fall of 2006 in cooperation with the Johnson County Museum, Johnson County Archives, and Olathe Public Library. It was funded by the Institute of Museum and Library Services, as well as the Johnson County Heritage Trust Fund.

The site features, among many other things, more than 12,000 historic pictures, historic atlases and essays, a searchable obituary database, and curriculum guides for teachers and students in grades 4-12.

Keil Hileman, Monticello Middle School (USD #232) history teacher and 2004 Kansas Teacher of the Year, logs on to the library Web site, www.jocolibrary.org, for resources to supplement his classroom instruction.



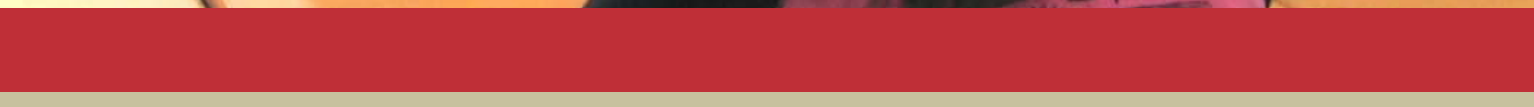


City Library
Search & Research

7th Grade Agenda
8th Grade Agenda

ALAMO
Mex. Am. WAR
- Signal Union shot

12	13	14	15
19	20	21	22
26	27	28	29







community

A mural depicting “What Freedom and Democracy Mean to Me,” painted by teens, was the centerpiece of the September 11, 2001, Remembrance Ceremony held at Johnson County Library. The event, which drew more than 200 people, provided an opportunity for the public to thank area first responders and reflect on freedom in America.

Speakers included a local fireman who traveled to New York City to assist with the World Trade Center recovery. Poetry and personal insights were provided by members of the public, including a young Muslim teen who assisted with the mural.

The Library also hosted issues forums related to democracy’s challenge and developed a “Kansas City Remembers 9/11” video with public input in cooperation with Time Warner Cable and *The Kansas City Star*.

Teens of different backgrounds joined together to create a large mural incorporating their views of democracy and the effects of the incidents on September 11, 2001. The mural hangs on the wall in the teen room at Central Resource Library.

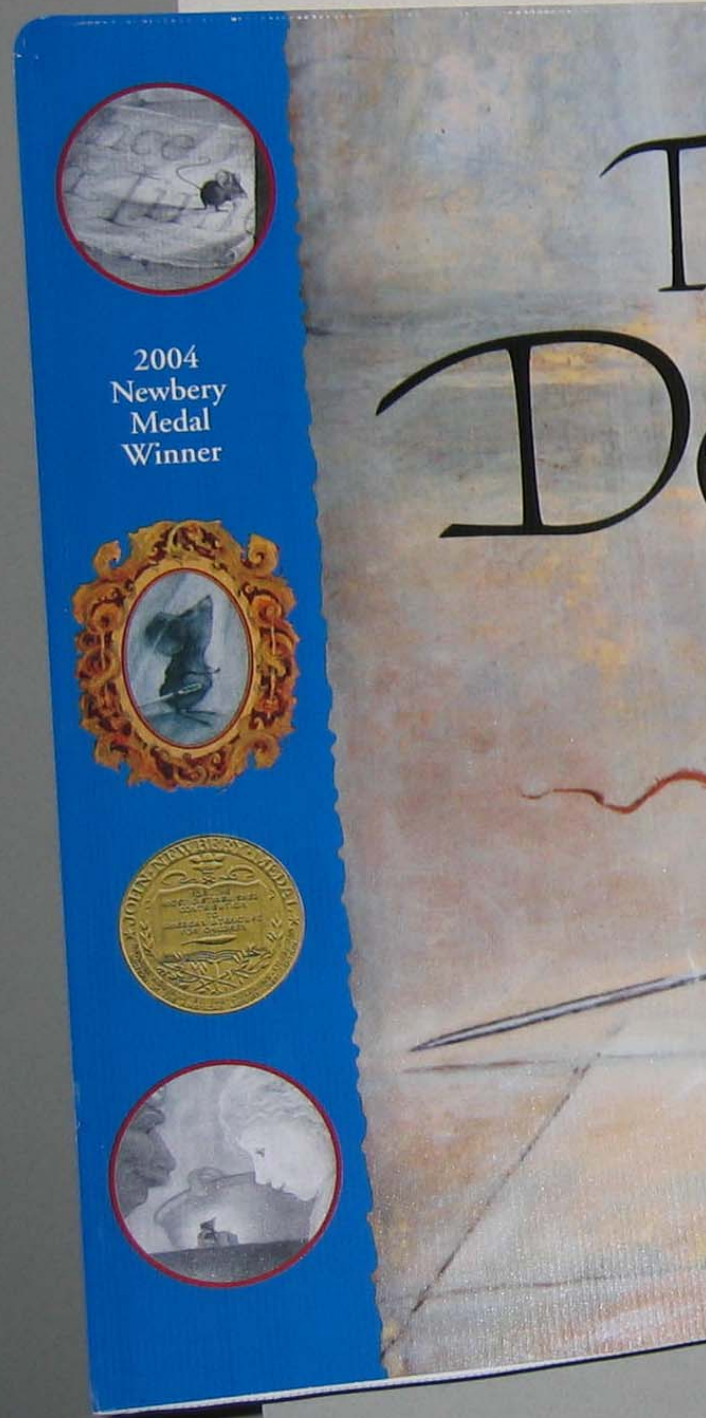
outreach

Providing literary related events such as book discussions and author visits is one of the ways Johnson County Library connects with the community and promotes literacy.

In September, the Library hosted a visit with Newbery award winner and popular children's author Kate DiCamillo (*Because of Winn-Dixie*, *The Tale of Despereaux*). Approximately 200 adults and children attended a presentation at Central Resource Library which was also podcast simultaneously for those who could not fit into the room.

During the visit, the Library also provided an opportunity for DiCamillo to meet with foster children and their families. In the weeks prior, the children read and discussed the author's books as well as others with themes of abandonment, growing up quickly and consequences of being separated from family. The children had an opportunity to talk with DiCamillo and other foster children and parents and to share and describe a project they had worked on during the reading group.

A brunch for visiting author Kate DiCamillo, 2005 winner of the Newbery Award, was hosted by Johnson County Library. Participating were 25 foster children, parents, library staff, a caseworker and a judge.





The Tale of
Despereaux

KATE DICAMILLO
The Tale of
Despereaux

KATE DICAMILLO
The Miraculous
Journey of
Edward Tulane

GRANTS:

- Partnership for a Nation of Learners Grant from the Institute of Museum and Library Services (IMLS) in the amount of \$249,900 for KC Science, INC (Inspiring Natural Curiosity), in partnership with KCPT, Science City, Science Pioneers and Pathfinder Science
- The Big Read grant from IMLS and National Endowment for the Arts in the amount of \$14,000 to produce community literary programming based on Amy Tan's *The Joy Luck Club*

AWARDS:

Exceptional Service Award

Presented to the Outreach Services Department by the Association of Specialized and Cooperative Library Agencies (ASCLA), a division of the American Library Association (ALA)

National Association of Counties (NACo) Achievements Awards

- When Opportunity Knocks: From Problem to Partnership (Children's Book Week with Johnson County Health Dept.)
- Reviving Literary Discussion: Book Club to Go Kits
- Not Forgotten: Literature for Adults with Developmental Disabilities
- Out of Sight, Out of Mind – No More: AIDS Awareness
- JoCoHealth.net: Thriving on Its Utility

National Association of County Information Officers (NACIO) Awards

- 2005 Annual Report – Annual Reports: Magazine or Newsletter Format
- Read a Good Movie – Graphic Design: Logos, Themes and Letterheads
- Dragons, Dreams and Daring Deeds Summer Reading Program Log, Coloring Version – Graphic Design: Special
- *elementia*, premier edition – External Publications: Other Format

2006 State of Kansas Health Award

Presented by National Commission on Libraries and Information Services

Excellence in Community Service Award 2006

Presented by United Community Services

Employer Support "Above and Beyond" Award

Presented by the National Guard and Reserve Forces (ESGR)

Fourth Place, America's Best Libraries

Hennen's American Public Library Rating Index in the 250,000-500,000 population category

Johnson County Library is one of 80 libraries featured in *Heart of the Community: The Libraries We Love*, published by the Berkshire Publishing Group in December 2006

Expenditures

General Fund:	
Personnel	\$12,170,550
Contractual	2,873,379
Commodities	2,680,213
Capital	0
Grants	381,511
Transfer to Capital Projects	0
Interfund Transfers	448,852
Total	\$18,554,505
Special Use Fund:	
Contractual	\$ 311,256
Commodities/Capital	498,915
Debt Paid	2,316,114
Transfer to Capital Projects	0
Total	\$ 3,126,285
GRAND TOTAL	\$21,680,790

Statistical Summary

	2006	2005	2004	2003	2002	'02-'06 Change
Total Holdings ¹	1,196,429	1,177,167	1,216,777	1,198,745	1,220,181	-1.9%
Total Borrowers ²	374,634	345,753	340,405	320,327	297,970	25.7%
Total Circulation ¹	6,205,428	6,179,254	5,832,860	5,378,397	5,501,007	12.8%
Reference Transactions	257,070	287,083	457,676	460,034	461,256	-44.3%
Online Reference Searches ³	933,019	750,963	622,692	464,529	375,532	148.5%
Library Visits (Door Count)	2,501,459	2,534,070	2,501,857	2,533,304	2,577,919	-3.0%
Program Attendance	108,969	101,654	98,353	96,231	80,831	34.8%
Library Employees (FTEs) ⁴	282.6	282.7	279.9	281.9	282.4	0.1%
Volunteer Hours	31,208	30,655	25,970	27,864	28,040	11.2%
District Population (est.) ⁵	400,600	391,500	386,100	376,900	368,700	8.7%

¹Circulation and holdings include audiovisual materials, art prints, paperbacks and catalogued books. Materials in the U.S. government documents depository are not included in holdings.

²Patron database was purged in 2002 and 2005 of cardholders who had not used their cards for three years.

³Searches performed internal and external to library facilities using online electronic resources to which JCL subscribes.

⁴Johnson County Library Employees (FTEs) are total authorized full-time equivalents.

⁵Estimates of population for 2002-2005 are from the SURVEY OF BUYING POWER; 2006 is from the EDITOR AND PUBLISHER MARKET GUIDE.

JOHNSON COUNTY LIBRARY LOCATIONS

CENTRAL RESOURCE LIBRARY

9875 W. 87th St. • Overland Park, KS 66212
(913) 495-2400 TDD (913) 495-2433

ANTIOCH NEIGHBORHOOD LIBRARY

8700 Shawnee Mission Pkwy. • Merriam, KS 66202 • (913) 261-2300

BLUE VALLEY NEIGHBORHOOD LIBRARY

9000 W. 151st St. • Overland Park, KS 66221 • (913) 495-3850

CEDAR ROE NEIGHBORHOOD LIBRARY

5120 Cedar • Roeland Park, KS 66205 • (913) 384-8590

CORINTH NEIGHBORHOOD LIBRARY

8100 Mission Rd. • Prairie Village, KS 66208 • (913) 967-8650

DESOTO NEIGHBORHOOD LIBRARY

33145 W. 83rd St. • De Soto, KS 66018 • (913) 583-3106

EDGERTON NEIGHBORHOOD LIBRARY

319 E. Nelson • Edgerton, KS 66021 • (913) 893-6720

GARDNER NEIGHBORHOOD LIBRARY

137 E. Shawnee St. • Gardner, KS 66030 • (913) 856-7223

LACKMAN NEIGHBORHOOD LIBRARY

15345 W. 87th St. Pkwy. • Lenexa, KS 66219 • (913) 495-7540

LEAWOOD PIONEER NEIGHBORHOOD LIBRARY

4700 Town Center Dr. • Leawood, KS 66211 • (913) 344-0250

OAK PARK NEIGHBORHOOD LIBRARY

9500 Bluejacket • Overland Park, KS 66212 • (913) 752-8700

SHAWNEE NEIGHBORHOOD LIBRARY

13811 Johnson Dr. • Shawnee, KS 66216 • (913) 962-3800

SPRING HILL NEIGHBORHOOD LIBRARY

109 S. Webster • Spring Hill, KS 66083 • (913) 592-3232

JOHNSON COUNTY LIBRARY MAILING ADDRESS

P.O. Box 2933 • Shawnee Mission, KS • 66201-1333

JOHNSON COUNTY LIBRARY WEB SITE

www.jocolibrary.org



Johnson County Library
9875 W. 87th St., Overland Park, KS
P. O. Box 2933
Shawnee Mission, KS 66201-1333

Non-Profit Org.
U.S. POSTAGE PAID
Permit No. 78
Shawnee Mission, KS