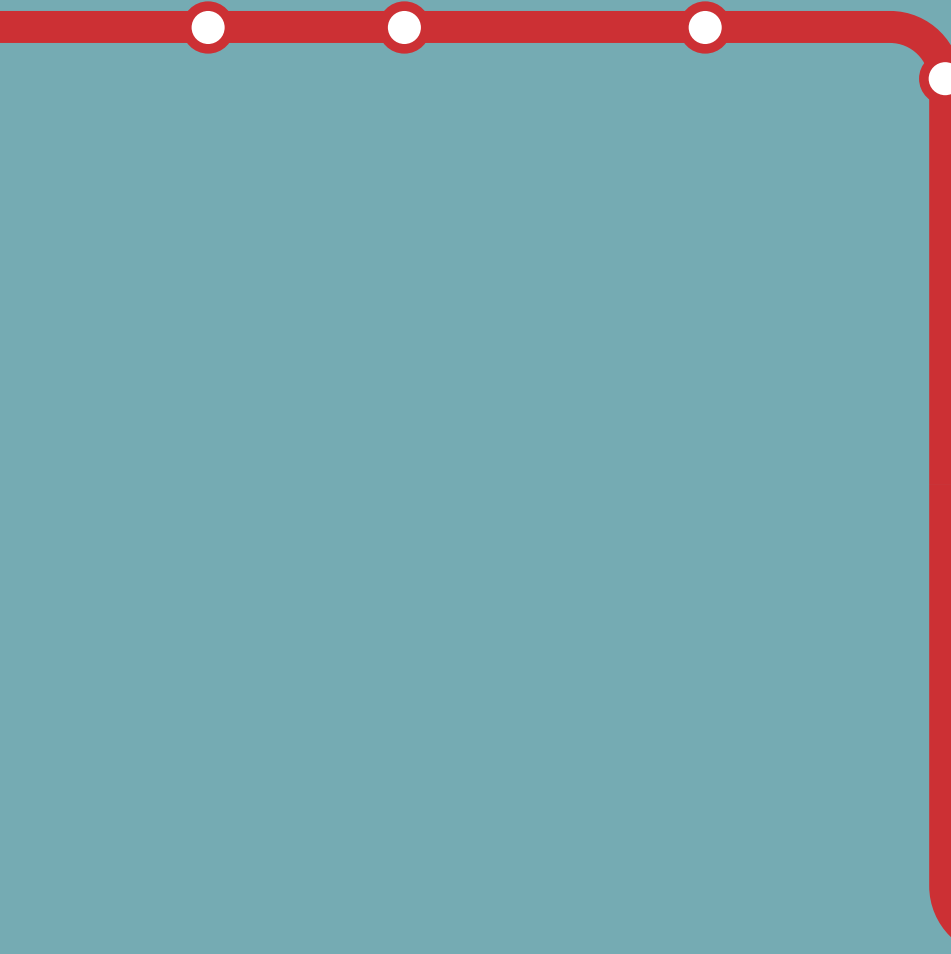




johnson county library

2012 annual report




The sky is a translucent blue, galvanized by the retreating night; the morning air is crystal crisp, fresh and clean. I turn my car onto Santa Fe Drive before it merges with 87th St. and wonder what it might have been like to travel west on the Santa Fe Trail on such a wintery morning. My horse's breath would be steaming, the wagon creaking and moaning and my body probably doing the same.

We are a nation of explorers, forged by curiosity and self-reliance, we want to discover and experience the unknown. The pioneer spirit is quintessentially American and it seems that as a nation our eyes are always drawn to the horizon of the possible. We take pride in following our own path and finding our own way.

The heart of public libraries has always embraced these values. We understand that acquiring a lifetime of knowledge is its own journey. It should not be a journey that is only available to the privileged few with wealth and means.

Johnson County Library is continuing to move forward, we have recently added eBooks and downloadable music as new digital services. Central Resource Library is getting a fresh coat of paint and we are restoring Wednesday evening hours across the entire system and restoring Friday hours at Cedar Roe. It is my plan to add additional programming and events throughout the year.





In 2013 we will be updating our strategic plan with a focus of incorporating the work completed in the Citizens Visioning Committee Report. We plan to engage community members at all levels and will seek their assistance in cultivating a framework that will lead us forward.

We could not do this work alone, and it is with the help of the Friends of the Library and Library Foundation that many of these services are possible. I would like to take this moment to acknowledge and thank them for the work that they do.

As I park my car and walk toward the library I can see my breath in the cold morning air. I realize that this building not only holds my office but contains endless pathways and trails for the mind to explore. Frederick Douglass perhaps said it best:

“Once you learn to read, you will forever be free.”

TS Casserley

Sean Casserley
County Librarian



Johnson County Library experienced some challenges following the County's offering of a voluntary retirement incentive program in late 2011. The Library lost 29 experienced staffers including County Librarian, Donna Laufer. Due to the reduction in staff, the library reduced both hours and programs much to the chagrin of staff.

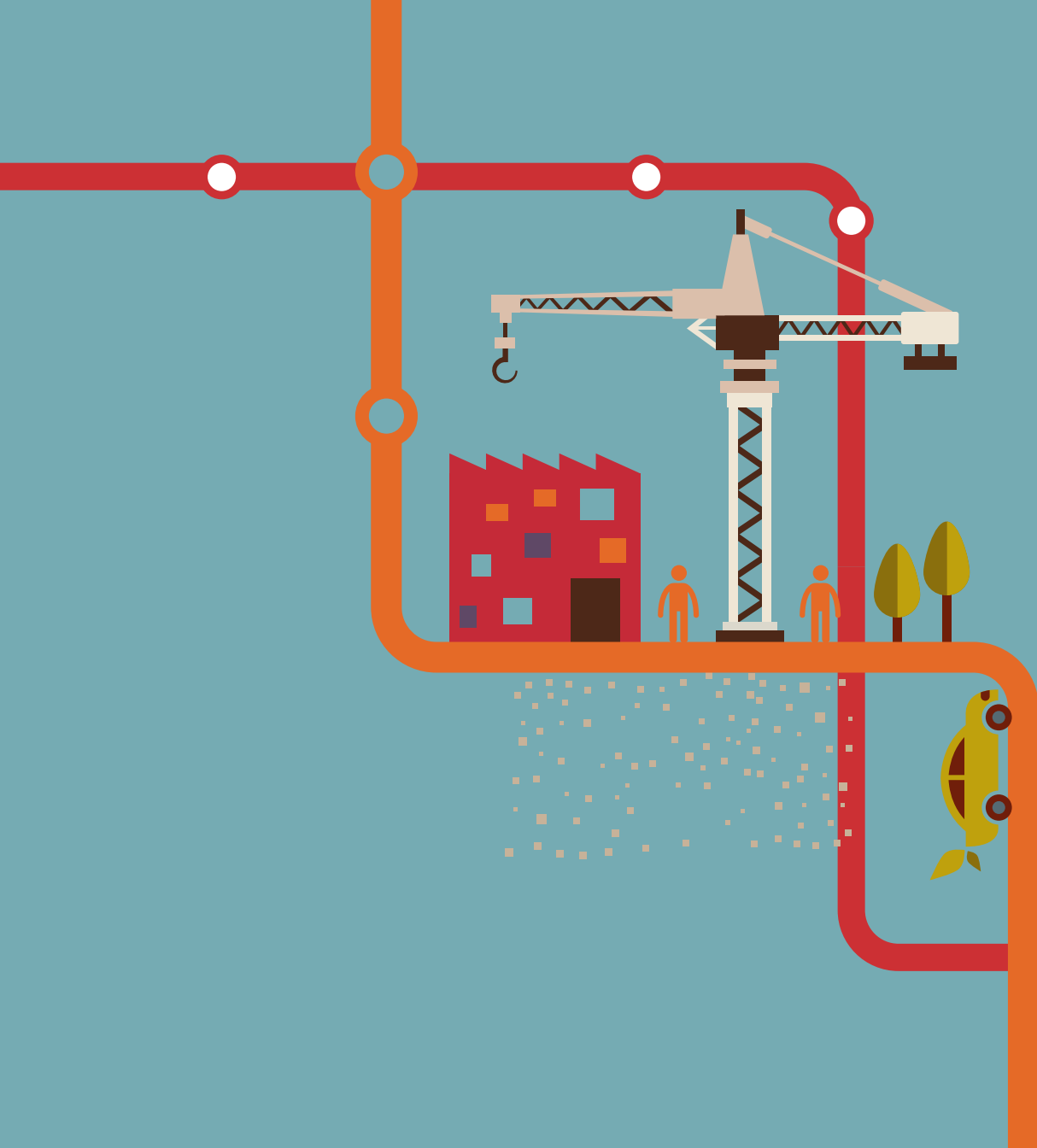
By May of 2012, Johnson County Library was under new leadership and new County Librarian Sean Casserley set to work on moving Johnson County Library forward and working on the foundations for a new strategic plan.





the Library wrapped up the 2008 Strategic Plan entitled Experience Johnson County Library. The plan had focused on increasing self-service options, improving efficiencies in materials handling, reaching under-served populations, and leveraging the budget. By the end of 2012, hard-working library staff had implemented self-service at all locations that included self-pick up of holds as well as self-checkout.

The Library also wrapped up the extensive RFID project in 2012. The project, launched in 2011, required library staff to install Radio Frequency Identification (RFID) equipment and add tags to all of the books and audiovisual materials in every library location.



The RFID tagging allows the library to track the location of each item which will reduce the number of lost and missing items.

Library staff completed the RFID project by the end of April 2012. The project enabled the following outcomes:

- Optimized self-service and enhanced patron experience
- Significant return on investment from self-service equipment

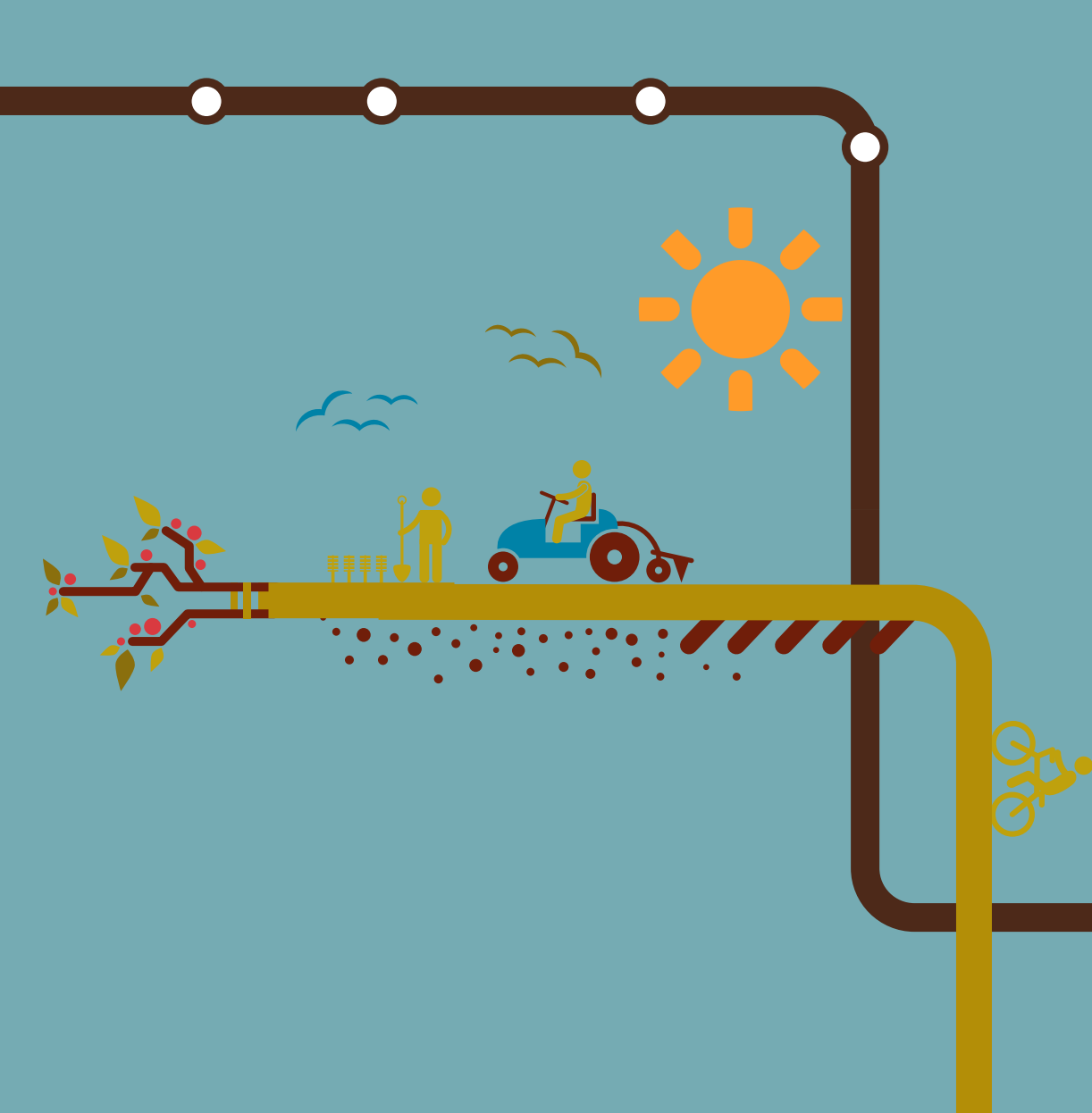
Furthering the library efforts toward efficiency was the installation of sorters at Central Resource Library, Leawood Pioneer Neighborhood Library and Blue Valley Neighborhood Library. These sorters reduce the number of times library staff need to touch library materials to log them back into the system and of course, reduces errors in patron returns.



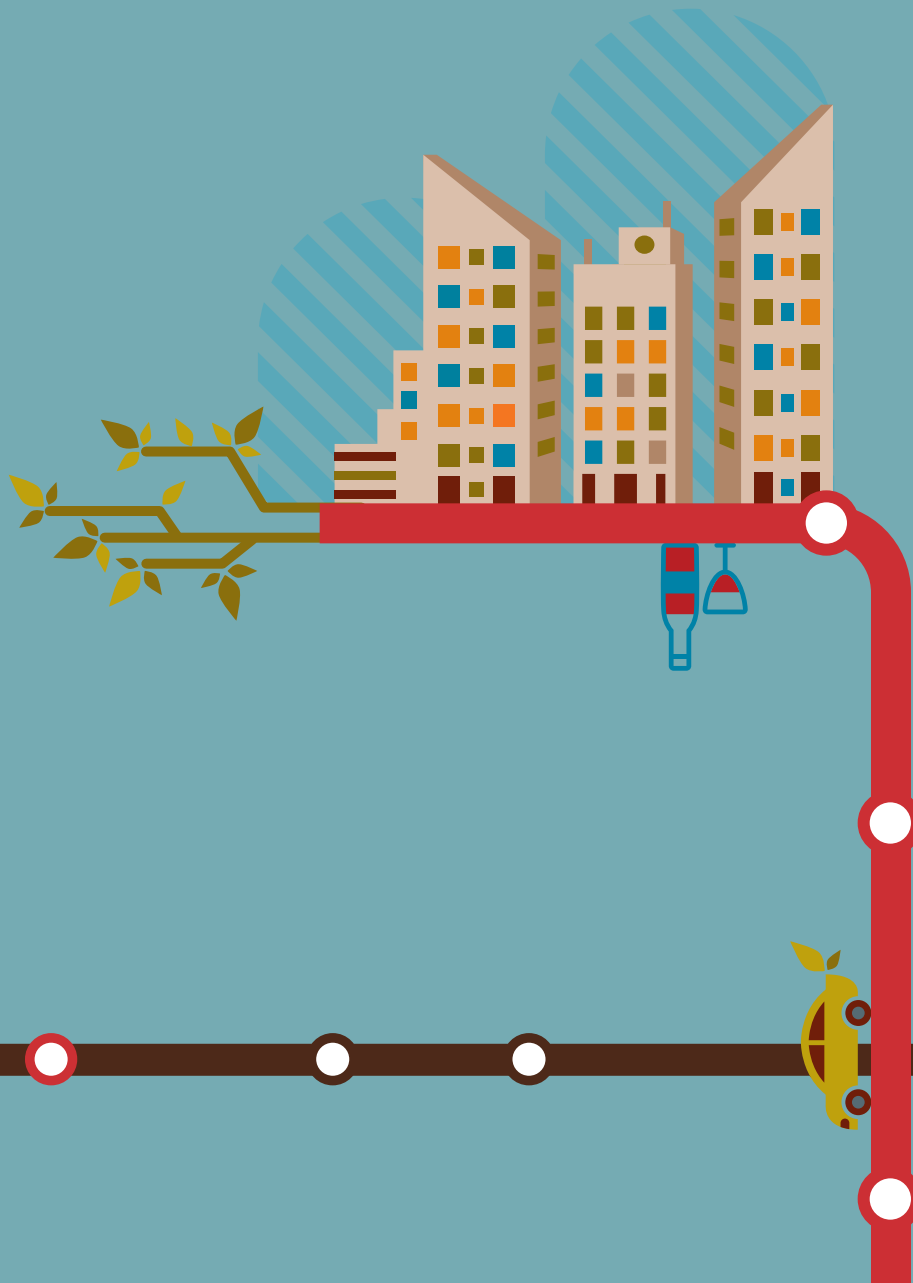


Johnson County Library's award-winning 6 by 6, Ready to Read program was acknowledged and lauded by the State Library of Kansas in 2012 and by the end of 2012 the State Library of Kansas had not only adopted the program but had expanded it to every library in the state with the help of Johnson County Library staff trainers and experts.

Johnson County Library also successfully launched eCommerce in 2012, enabling patrons to pay fines and fees online.



J ohnson County Library was proud to receive two major awards in 2012, one from The Ash Center for Democratic Governance and Innovation at the John F. Kennedy School of Government at Harvard University. The other award from MarCom (honoring excellence in marketing and communications) was awarded to the library for the Legacies of the Civil War series that launched in 2011 and culminated with a visit from renowned author Jane Smiley in April 2012.



Under the direction of County Librarian Sean Caserley, Johnson County Library worked to solicit feedback from the public in the summer, fall and winter of 2012. From implementing new features in Bibliocommons, the Library's interactive online catalog, to engaging via social media, to creating more robust content for the Staff Picks Blog, library staff worked to engage library patrons in numerous ways. As a result, the Library saw an increase in volunteers, high attendance numbers at civic engagement programs and patron involvement in a Community Garden at Oak Park Neighborhood Library.

2012 was a banner year and a year of great change for Johnson County Library. Staff and library leadership alike look forward to additional service offerings in the future.

JOHNSON COUNTY LIBRARY ADMINISTRATION

Sean Casserley, County Librarian
Tricia Suellentrop, Deputy County Librarian
Diana Graves, Administrative Manager
Kasey Riley, Communication Manager
John Helling, Systemwide Services Manager
Jennifer Mahnken, Branch Services Manager
Matt Sapp, Information Technology Manager
Carolyn Weeks, Associate Director for Central Services

JOHNSON COUNTY LIBRARY BOARD

Mitra Templin, Chair
Catherine Nugent, Vice-Chair/Secretary
Nancy Hupp, Treasurer
Kristin E. Hansen
Emmanuel Obi
Neil Shortlidge*
Carol Snyder
Charley Vogt
*appointed Spring 2012

JOHNSON COUNTY, KANSAS BOARD OF COUNTY COMMISSIONERS

Ed Eilert, Chairman
C. Edward Peterson, District 1
Jim Allen, District 2
David Lindstrom, District 3
Jason Osterhaus, District 4
Michael Ashcraft, District 5
Cal Hayden, District 6

Statistical Summary

	2012	2011	2010	2009	2008	'08-'12 Change
Total Holdings ¹	954,620	1,056,232	1,108,718	1,143,168	1,159,703	-17.68%
Total Circulation ¹	6,384,594	6,490,671	6,978,616	6,938,467	6,250,039	2.15%
Reference Transactions	190,099	225,589	245,167	231,595	243,542	-21.94%
Online Reference Searches ²	904,929	820,675	1,025,770	1,037,624	1,326,012	-31.76%
Library Visits (Door Count)	2,514,456	2,750,889	2,783,498	2,742,281	2,628,430	-4.34%
External Visits to website	1,969,368	2,026,473	2,330,735	2,206,840	1,901,700	3.56%
Program Attendance	47,574	40,036	66,304	73,632	90,408	-47.38%
Library Employees (FTEs) ³	246	267.8	286.6	283.7	282.7	-13.11%
Volunteer Hours	53,535	48,776	46,373	41,677	36,312	47.43%
District Population (est.)	430,560	421,500	421,500	414,900	410,700	4.84%

¹Circulation and holdings include audiovisual materials, art prints, paperbacks and catalogued books. Materials in the U.S. government documents depository are not included in holdings.

²Searches performed internal and external to library facilities using online electronic resources to which Johnson County Library subscribes.

³Johnson County Library Employees (FTEs) are total authorized full-time equivalents.

Expenditures

General Fund:

Personnel	\$12,813,134
Contractual	3,003,830
Commodities	3,317,489
Capital	676,083
Grants	217,244
Transfer to Capital Projects	492,934
Interfund Transfers	—
Total	\$20,520,714

Special Use Fund:

Contractual	\$ —
Commodities/Capital	224,306
Debt Paid	2,314,508
Transfer to Capital Projects	150,000
Total	\$2,688,814

GRAND TOTAL **\$23,209,528**



ANTIOCH NEIGHBORHOOD LIBRARY

8700 Shawnee Mission Pkwy. • Merriam, KS 66202

BLUE VALLEY NEIGHBORHOOD LIBRARY

9000 W. 151st St. • Overland Park, KS 66221

CEDAR ROE NEIGHBORHOOD LIBRARY

5120 Cedar • Roeland Park, KS 66205

CENTRAL RESOURCE LIBRARY

9875 W. 87th St. • Overland Park, KS 66212

CORINTH NEIGHBORHOOD LIBRARY

8100 Mission Rd. • Prairie Village, KS 66208

DESOTO NEIGHBORHOOD LIBRARY

33145 W. 83rd St. • De Soto, KS 66018

EDGERTON NEIGHBORHOOD LIBRARY

319 E. Nelson • Edgerton, KS 66021

GARDNER NEIGHBORHOOD LIBRARY

137 E. Shawnee St. • Gardner, KS 66030

LACKMAN NEIGHBORHOOD LIBRARY

15345 W. 87th St. Pkwy. • Lenexa, KS 66219

LEAWOOD PIONEER NEIGHBORHOOD LIBRARY

4700 Town Center Dr. • Leawood, KS 66211

OAK PARK NEIGHBORHOOD LIBRARY

9500 Bluejacket • Overland Park, KS 66214

SHAWNEE NEIGHBORHOOD LIBRARY

13811 Johnson Dr. • Shawnee, KS 66216

SPRING HILL NEIGHBORHOOD LIBRARY

109 S. Webster • Spring Hill, KS 66083



Johnson County
Library

www.jocolibrary.org
(913) 826-4600

